

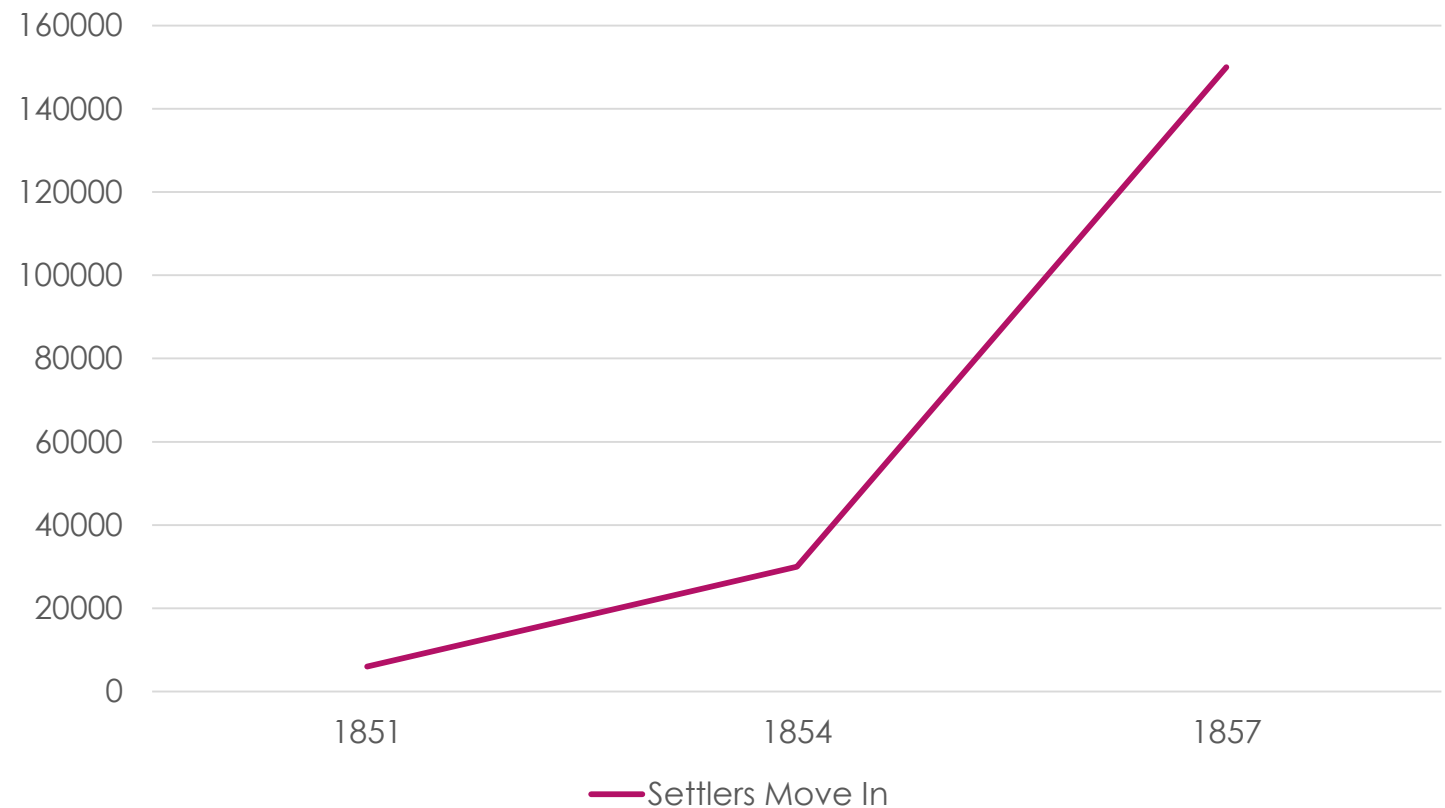
Minnesota's Newcomers

CHAPTER 7, pg.90-105

People Moving In

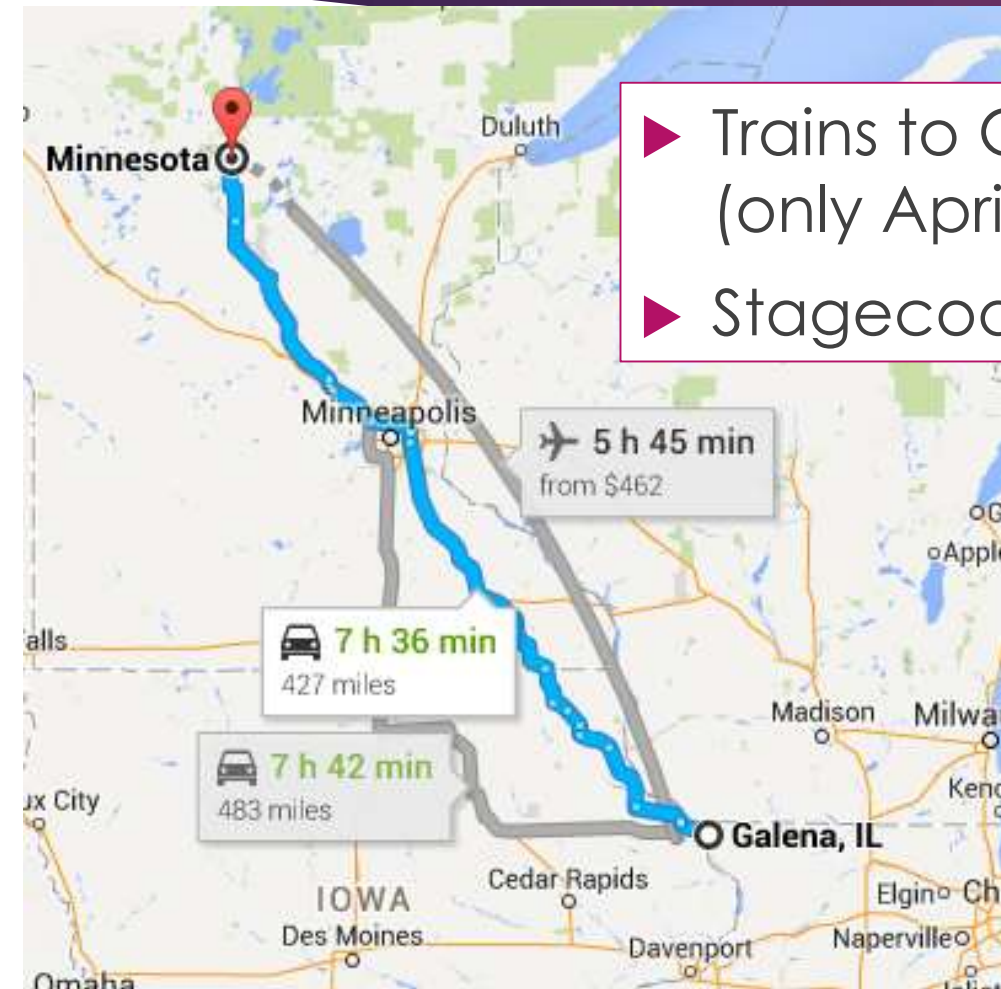
- ▶ Before 1850- most Minnesotans were Indians
- ▶ 1860s- LOTS of white people move in

People Moving in Per Year



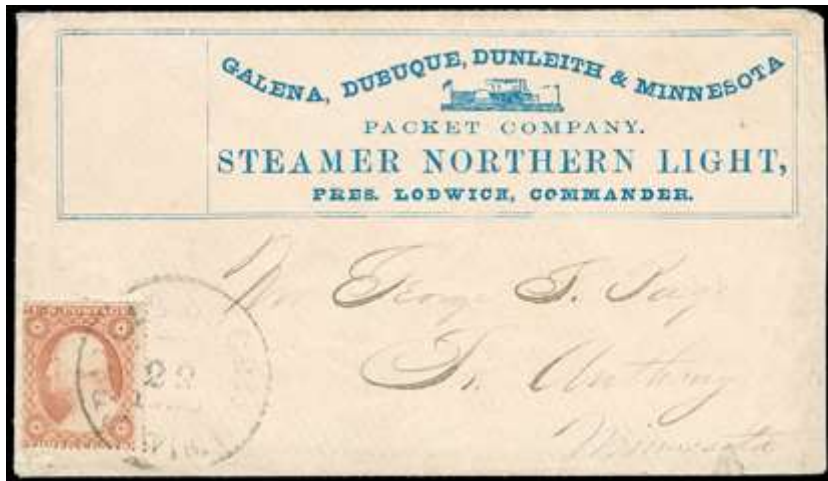
How'd People Get Here?

- ▶ Trains to Galena, IL, then steamboats to MN (only April-Nov.)- **2 days**
- ▶ Stagecoach from Galena, IL- **6 days**



How'd People Get Here?

- ▶ Ox cart (used by Metis people to cart furs, buffalo skins, etc. from Red River to St. Paul)-
30-40 days



First Teacher in MN



- ▶ 1847- Harriet Bishop
- ▶ From Vermont
- ▶ Three days later, school started
- ▶ Taught in St. Paul in an abandoned blacksmith's shop (**mud, rats**)
- ▶ Five students... then too many for the building
- ▶ Only 2 white kids... Metis student translated for others (**French, Dakota**)



Temperance

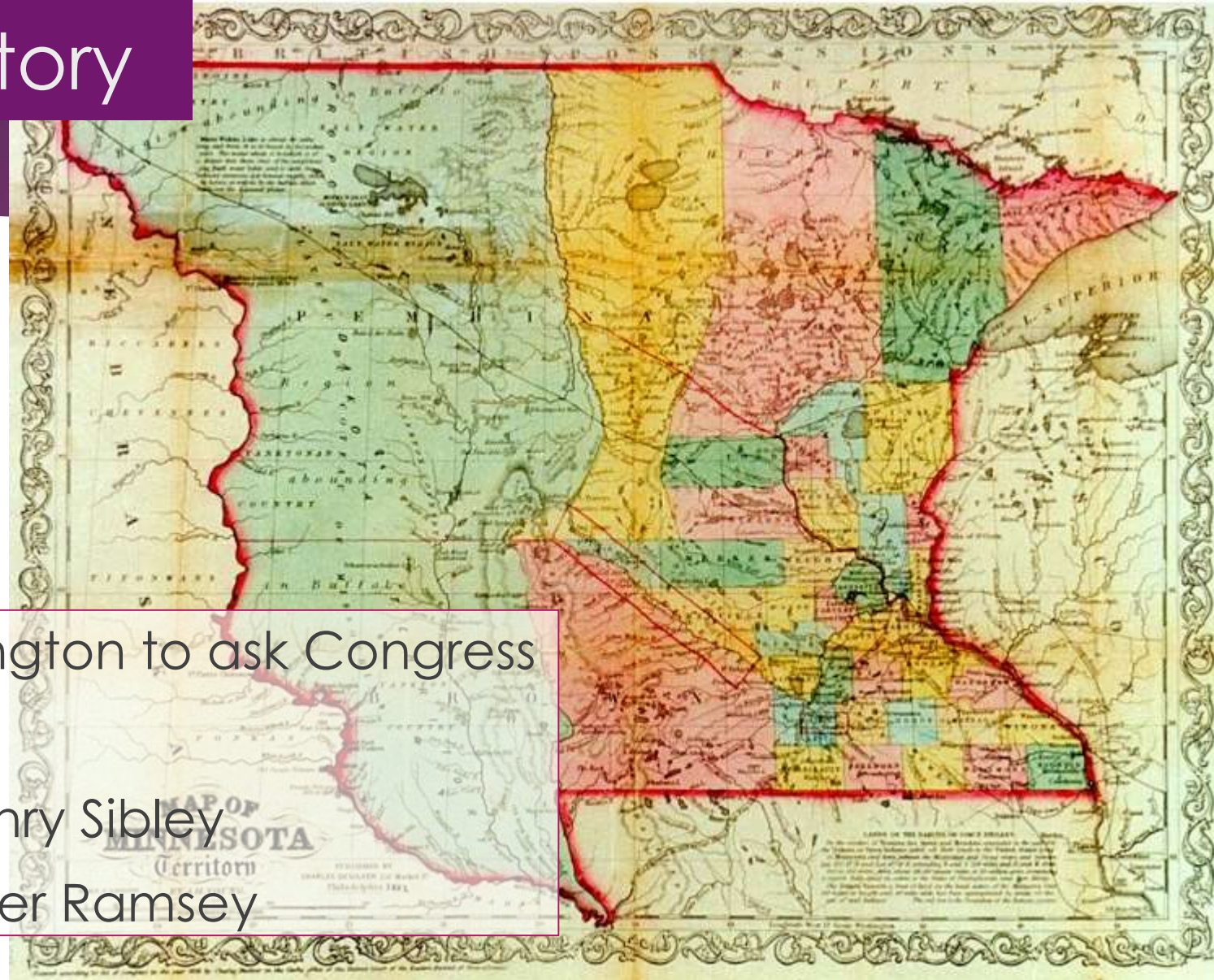
- ▶ Reform group that worked to make alcohol illegal
- ▶ Harriet Bishop started one



Becoming a Territory

How to become a territory:

- **5,000 adults**
 - **Elect a legislature**
 - **Congress says “yes”**
- ▶ Send Henry Sibley to Washington to ask Congress
 - ▶ 1849= territory
 - ▶ Territory representative= Henry Sibley
 - ▶ Territory governor= Alexander Ramsey



Reservations

- ▶ The place Indians would go after white people pushed them off their land
- ▶ Land set aside by govt.
- ▶ Fond du Lac, Grand Portage, Mille Lacs, 10mi of MN River
- ▶ Government wanted Indians to give up traditional customs
- ▶ Indians needed more land for hunting... so now what?



Attracting Newcomers

- ▶ First newcomers wrote letters back home
- ▶ Politicians, newspapers, land speculators, **recruiters** exaggerated... and sometimes lied

Come to Minnesota!
No diseases thanks
to the cold
weather!

PRODUCTS WILL PAY FOR LAND AND IMPROVEMENTS!

MILLIONS OF ACRES

View on the Big Map, between Council and Crest, representing Valley and rolling Prairie Land in Nebraska.

A SECTIONAL MAP showing exact location of our IOWA LANDS is with for 30 Cents, and of NEBRASKA LANDS for 20 Cents.

IOWA & NEBRASKA LANDS

FOR SALE ON 10 YEARS CREDIT
BY THE
Burlington & Missouri River R.R. Co.

AT 6 PER CT. INTEREST AND LOW PRICES.
Only One-Seventh of Principal Due Annually, beginning Four Years after purchase.
20 PER CENT. DEDUCTED FROM THE YEARS PRICE, FOR CASH.

LAND EXPLORING TICKETS SOLD
and Cost allowed in First Interest paid on Land bought in 30 days from date of ticket.
This year Land Exploring Ticket at 100 Cts. - Note where the Land is to be located.
These TICKETS are NOT FOR SALE, they are given to the first person who buys a ticket.
EXTRAORDINARY INDUCEMENTS OF FREIGHT and PASSAGE are AFFORDED TO PURCHASERS and THEIR FAMILIES.

Address **GEO. S. HARRIS, LAND COMMISSIONER,**
or **T. H. LEAVITT, Asst. Land Commr., Burlington, Iowa.**

Or apply to

FREE ROOMS for buyers to board themselves are provided at Burlington and Lincoln.

CIRCULARS are supplied GRATIS for distribution to ORGANIZING COLONIES and to induce individuals to emigrate WEST.

What kinds of people moved in?



- ▶ Lumber workers from East
- ▶ People who wanted a new start
- ▶ Families who wanted land
- ▶ From Europe and New England

Immigrant- person coming from another country

What about **emigrants**?

Owning their own land, being their own boss

Becoming a State

- ▶ As a state, MN could
 - ▶ Control finances
 - ▶ Vote in Congress

How to become a state:

- Congress says “yes”
- Residents must write state constitution
- Voters approve constitution and elect legislators
- Congress says “yes” again



Statehood!



- ▶ 32nd state
- ▶ May 11, 1858
- ▶ State's 1st governor= Henry Sibley

